

OptiKa

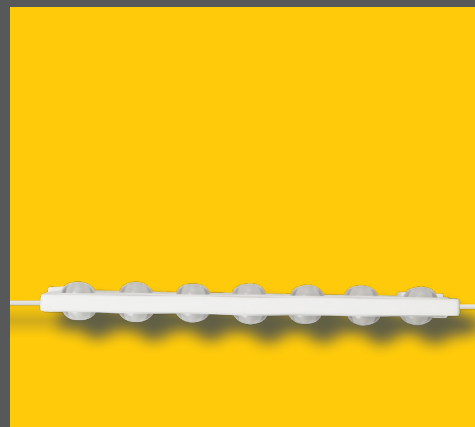
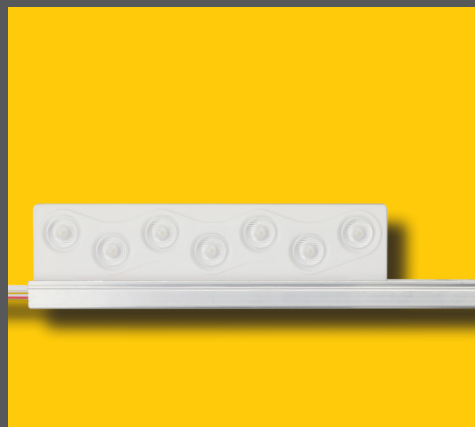
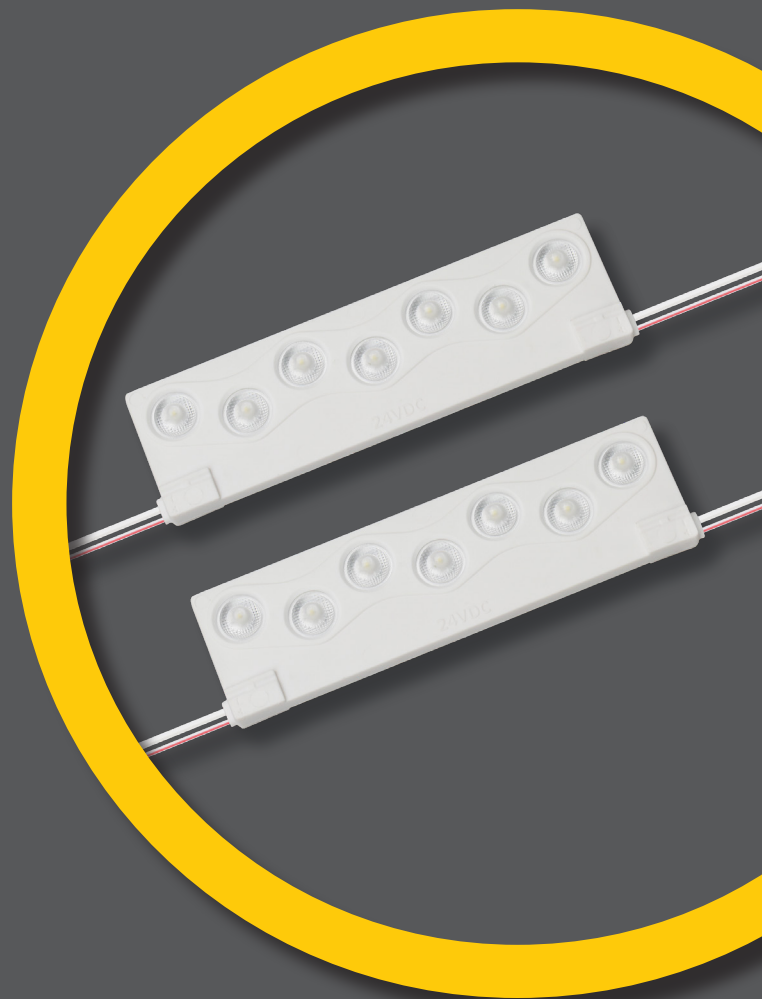
Signage – Backlighting

900 DS

7 YEARS
70.000 hrs
L70

Incredible **efficiency** and
luminosity packed together

- ▶ High-efficiency: 122 lm/w
- ▶ Robust and reliable: PVC, PC
- ▶ Consistent white: MacAdams 3
- ▶ 170° IRISLENS
- ▶ 24V, 7W, 855lm/module
- ▶ IP66 and fully UV rated



FEATURES & BENEFITS

- ▶ Optimised 170° lens for backlighting surfaces or letters with fewer modules but bright results. Saves on installation time and labor
- ▶ Flexible chains with 20 modules - cuttable anywhere
- ▶ IP66 rated for outdoor applications
- ▶ Durability: Robust body made with innovative thermally conductive plastic and PC lens, both UV rated
- ▶ Superior efficiency, 122 lm/W, gives incredible energy-savings
- ▶ DC 24V
- ▶ All modules are equipped with regulation component (24V±5%) to ensure that any fluctuation of the output voltage from the converter would not affect the lumen output, increase of temperature or lifetime of the module
- ▶ 3M 4229 adhesive-tape and screw-hole for mechanical fixation for mechanical fixation
- ▶ 100% aging test
- ▶ Wide operating temperature from -25°C to +55°C

NORMS & CERTIFICATES

- ▶ EN 61547/2009
- ▶ EN 62031/2008
- ▶ EN 62471/2006



LIFETIME & WARRANTY

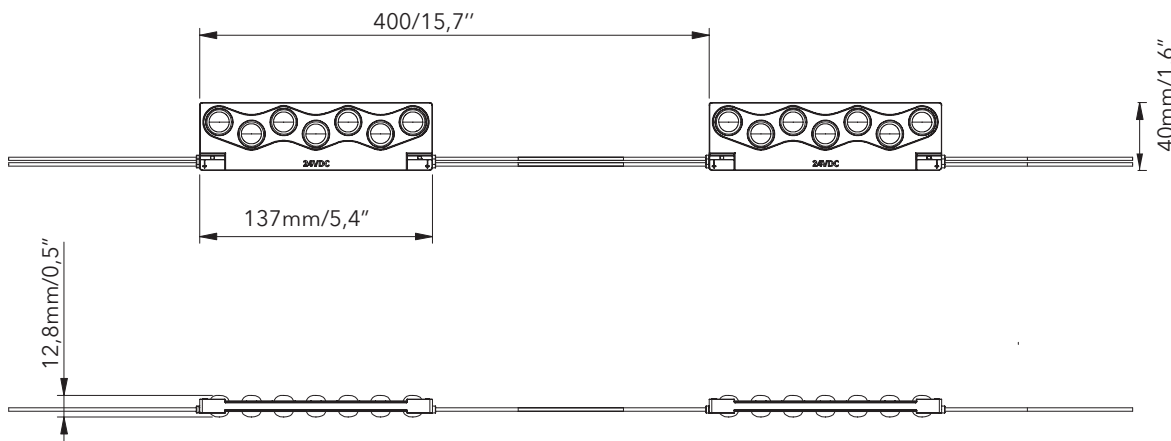
- ▶ Warranty: 7 years
- ▶ Lifetime: 70.000 hours at L70

TECHNICAL DATA

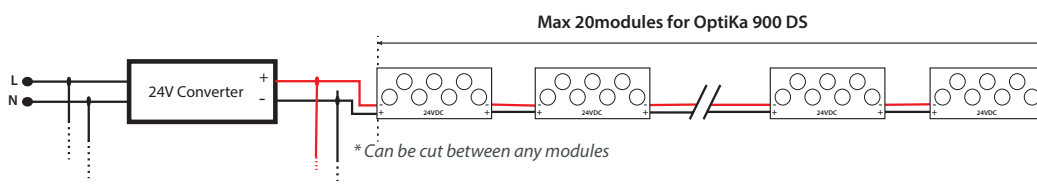
Code	Designation	Color	ColorTemp / wavelength	Voltage (V)	Typical power/mod (W)	Lumen output (lm/mod)	Efficiency (Lm/W)	Modules / chain	Modules max in series	Module distance - axe to axe (mm / in)
20880082	OptiKa 900 DS WDL 20mod 400mm 7W 24V IP66	WDL	6000-7000K	24	7	855	122	20	20	400±5 / 15,7"
20880083	OptiKa 900 DS VVV 20mod 400mm 7W 24V IP66	NW	3700-4200K	24	7	855	122	20	20	400±5 / 15,7"

Tolerance range for optical and electrical data: ±15 %.

DIMENSIONS

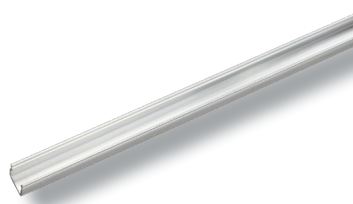


WIRING DIAGRAM

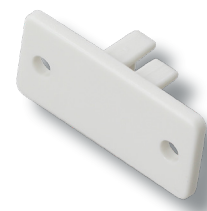


ACCESSORIES

Code	Designation
20880084	OptiKa 900 DS profile 1500mm
20880085	OptiKa 900 DS End cap



OptiKa 900 DS profile 1500mm



OptiKa 900 DS End cap

INGRESS PROTECTION IP66

- ▶ Product is designed to be used Indoors or Outdoors.
- ▶ The specified environmental protection of the LED module enclosure means that:
 - ▶ It is totally protected against the ingress of dust, and protected against powerful water jets (100 liters per minute) projected by a nozzle against enclosure from any direction.
 - ▶ Make sure the application (sign, box, etc.) where the LED modules are installed into, has proper drain holes for water to exit so that LED modules and any other electronic components are not submerged exceeding the IP66 certification limits.

INSTALLATION

- ▶ Always connect the LED modules to the power supply while it is OFF. Only then you can connect the power supply to electricity and turn it ON.
- ▶ Respect the maximum number of modules in a row.
- ▶ Check compatibility between LED and driver voltage.
- ▶ Install LED on a clean work station connected to the earth. All LEDs are sensitive to static electricity (ESD).
- ▶ Limit the cable length between LED and power supply (voltage drop).
- ▶ Do not make direct pressure on LED chip, this could damage the internal connection.
- ▶ Secure LED module lines with mechanical fixation (screws, glue ...) in addition to the adhesive tape.

PACKAGING

	Type	SIZE - LxWxH (cm)	SIZE - LxWxH (ft)	Weight (Kg)	Weight (lb)	Nb of Pcs / box
CARTON	OptiKa 900 DS	52x37x26	1,7x1,2x0,8	14,8	32,6	12

THERMAL BEHAVIOUR

The temperature limits indicated below are expressed in °C, at full load, after 3 hrs of operation conditions, with natural convection:

- ▶ Operation temperature Ta -25°C to +55°C
- ▶ Storage temperature Ts -40°C to +85°C
- ▶ Max. temperature tc point Tc +80°C

The life of the module will decrease when the maximum temperature limits are exceeded. If LEDs are operated for a continuous extended time at temperatures that exceed the maximum limits, the modules can fail.

Our Warranty will be void when LED modules are operated exceeding the maximum values indicated.