

# BakBox DynaMix

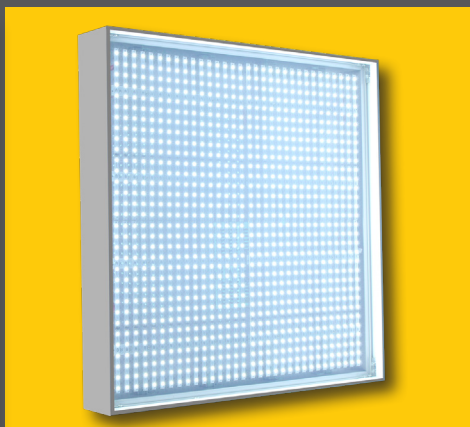
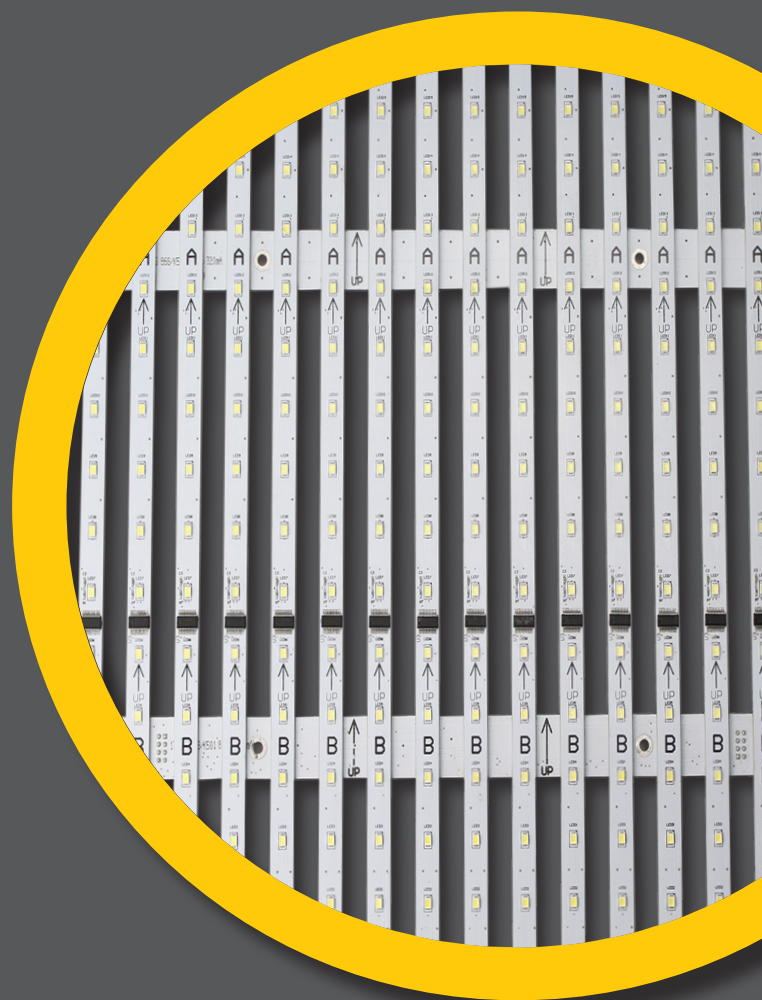
Signage – Backlighting

**3** YEARS  
30.000 hrs  
L50

Put **LIFE** into your **LIGHTBOX**  
Keep **customer's attention** with  
**dynamic lighting**

- ▶ IP20 system for Indoor application
- ▶ Modular sizes with 320x320mm LED Panels
- ▶ From 50 to 120mm lightbox depth

Click here to download  
promotional video



FEATURES & BENEFITS

- ▶ 320x320mm LED Panel for backlighting surfaces .Allows bright and very uniformly lit applications from XXmm to xmm depth
- ▶ IP20 rated for inddoor applications
- ▶ xx lm/W efficiency brings your customer high energy savings
- ▶ DC 5V
- ▶ Fixation clip and profile for an easy instalation3
- ▶ 100% aging test
- ▶ Wide operating temperature from -25° to +60°C

LIFETIME & WARRANTY

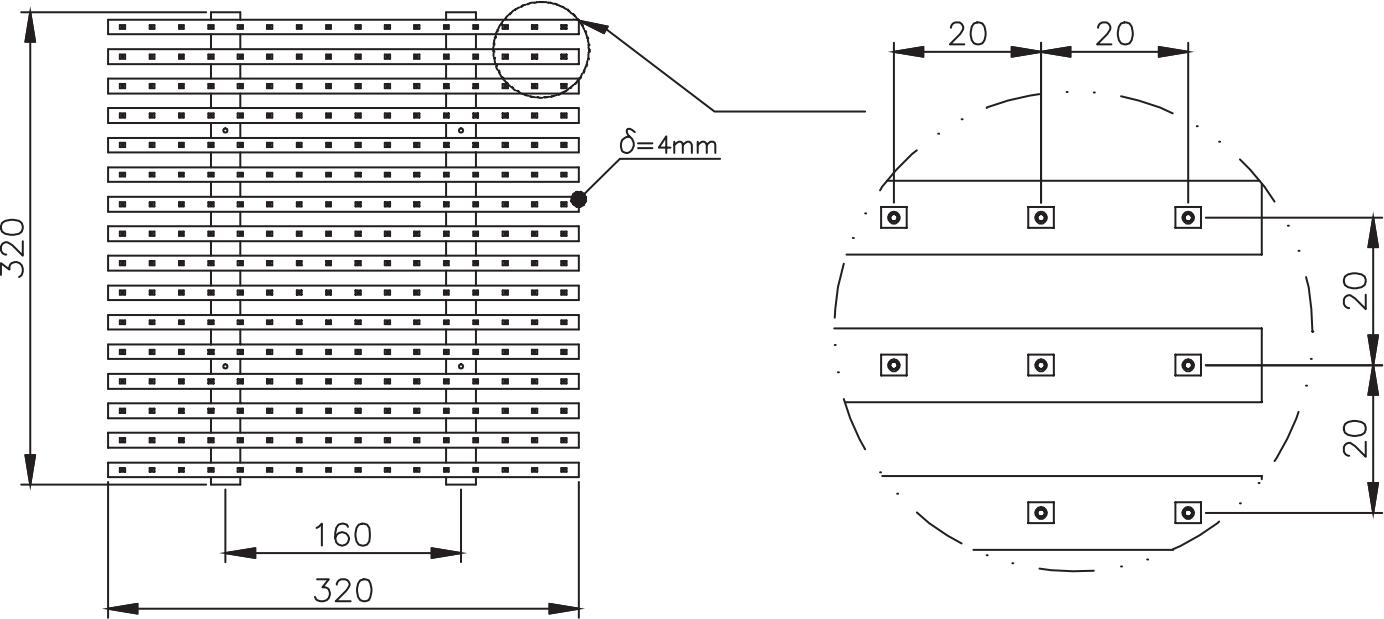
- ▶ Warranty: 3 years
- ▶ Lifetime: 30.000 hrs at L50

TECHNICAL DATA

Code	Designation	Color	ColorTemp / wavelength	Voltage (V)	Typical power/ mod (W)	Lumen output (lm/mod)	Effi- ciency (Lm/W)	Modules max in series	Module dimension (mm)
21460031	BakBox DynaMix 320x320 7.5W WS 5VDC IP20	WS	9000-11000K	5	7,5	589	79	8	320x320
21460034	BakBox DynaMix 320x320 WS 13W 5VDC IP20	WS	9000-11000K	5	13	900	70	8	320x320

Tolerance range for optical and electrical data: ±15 %.

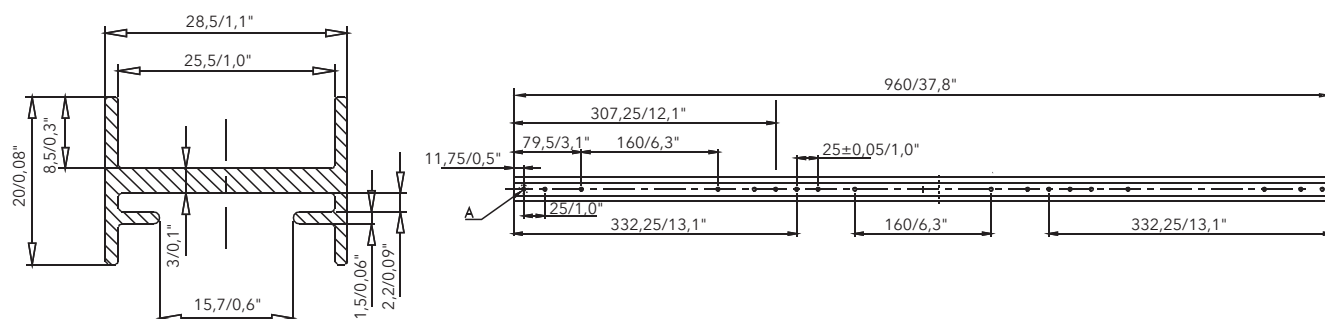
DIMENSIONS



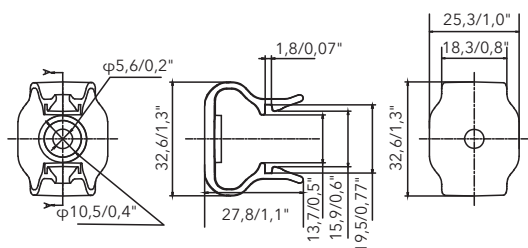
## ACCESSORIES

Code	Designation
21460042	BakBox DynaMix 100W 5VDC Converter IP20
21460035	BakBox DynaMix Controller 5VDC IP20
21460036	BakBox DynaMix data wire with clip-320 mm
21460037	BakBox DynaMix data wire with clip-640 mm
21460038	BakBox DynaMix data wire with clip-960 mm
21460039	BakBox DynaMix data wire with clip-1280 mm
21460040	BakBox DynaMix Fixation Clip
21460042	BakBox DynaMix 960mm Alu fixation rail

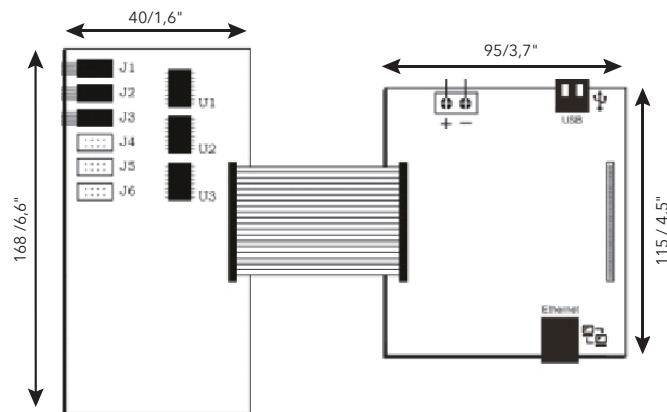
BakBox DynaMix 960mm Alu fixation rail



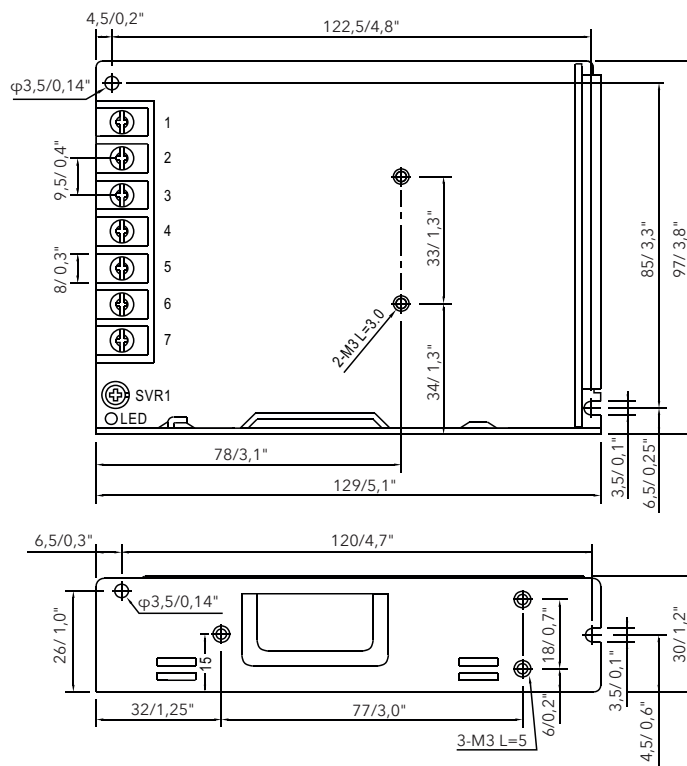
BakBox DynaMix Fixation Clip



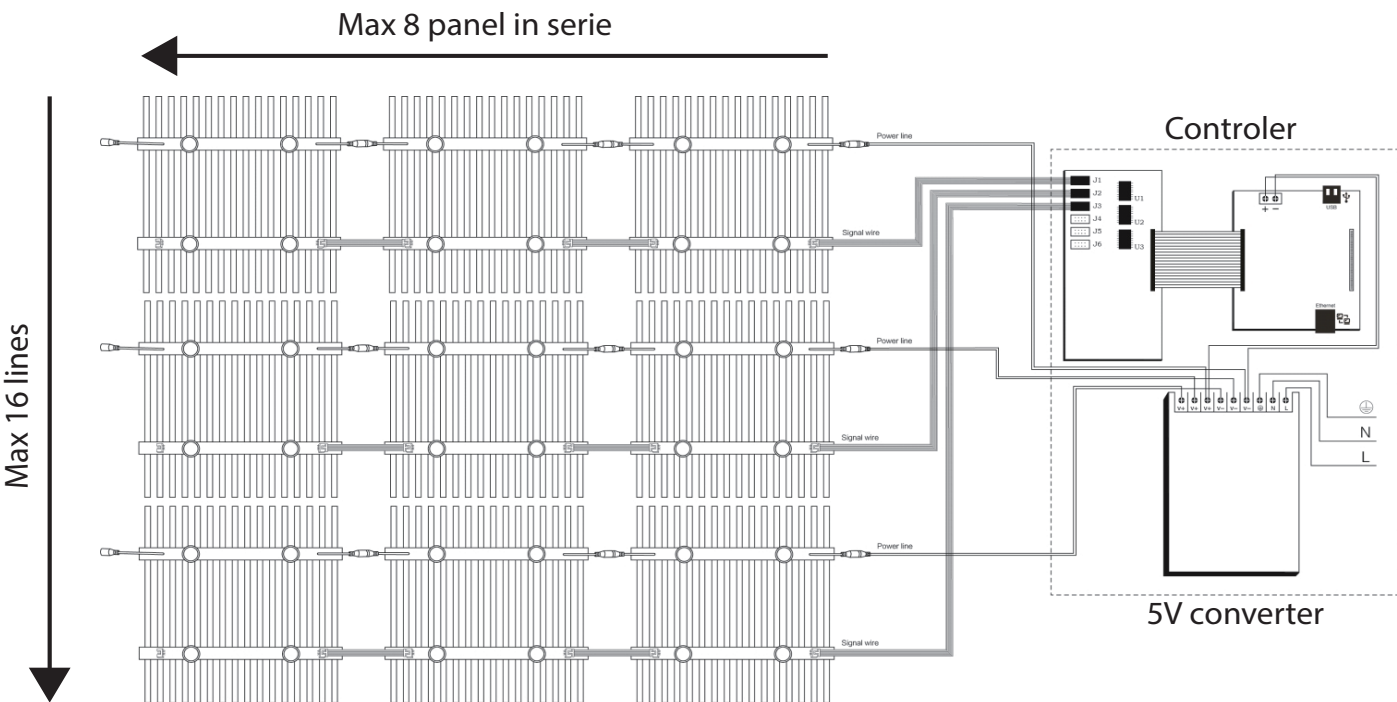
BakBox DynaMix Controller 5VDC IP20



BakBox DynaMix 100W 5VDC Converter IP20



WIRING DIAGRAM



INGRESS PROTECTION IP 20

► Module is an “inbuilt LED module” designed to be used Indoors applications

INSTALLATION

- Always connect the LED modules to the power supply while it is OFF. Only then you can connect the power supply to electricity and turn it ON.
- Respect the maximum number of modules in a row.
- Check compatibility between LED and driver voltage.
- Install LED on a clean work station connected to the earth. all LEDs are sensitive to static electricity (ESD).
- Limit the cable length between LED and power supply (voltage drop).
- Do not make direct pressure on LED chip, this could damage the internal connection.

PACKAGING

	Type	SIZE - LxWxH (cm)	SIZE - LxWxH (ft)	Weight (Kg)	Weight (lb)	Nb pcs / box
CARTON	BakBox DynaMix 320x320mm (7,5W, 13W, 25W)	39x39x32.5	1.8x1.8x1	4,2	9.25	10

THERMAL BEHAVIOUR

The temperature limits indicated below are expressed in °C, at full load, after 3 hrs of operation conditions, with natural convection:

- Operation temperature Ta -25° to +60°C
- Storage temperature Ts -25° to +70°C
- Max. temperature tc point Tc +60°C

The life of the module will decrease when the maximum temperature limits are exceeded. If LEDs are operated for a continuous extended time at temperatures that exceed the maximum limits, the modules can fail.

Our Warranty will be void when LED modules are operated exceeding the maximum values indicated.