

SENSIK WALL SOLAR

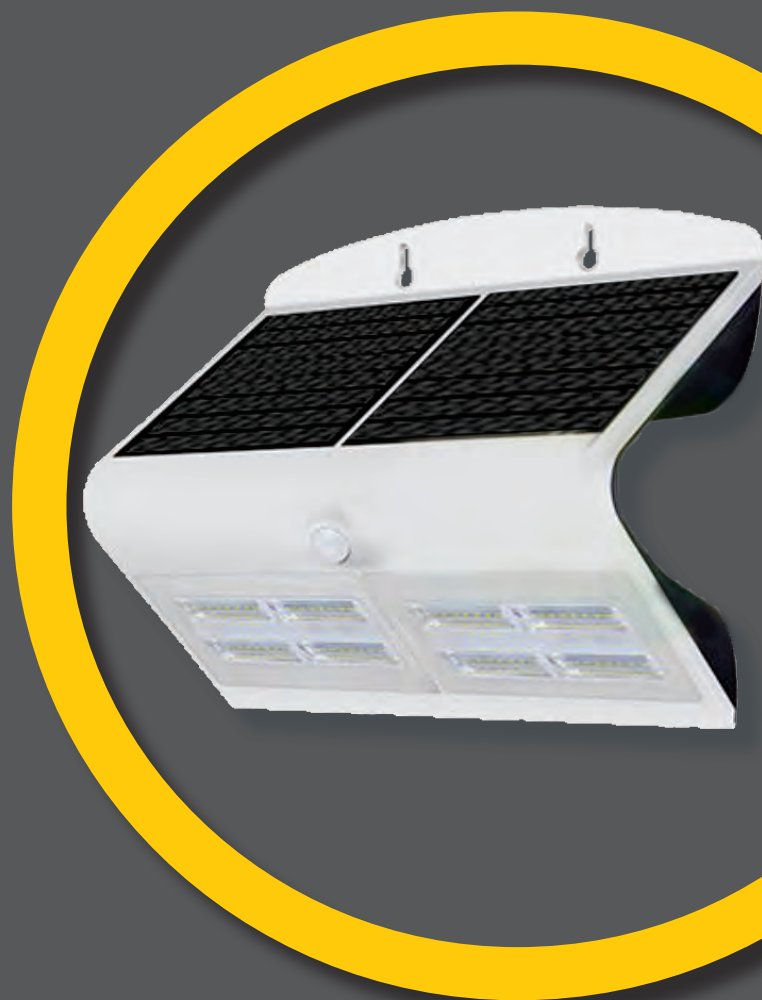
100% SUSTAINABLE - AREA LIGHTING

2-7W

2 YEARS
500 CYCLES
L50

Parking and Security Light for small areas

- ▶ Solar panel offers up to 5 hrs autonomy
- ▶ Fire-proof and Anti-UV
- ▶ Smart sensor and dimming modes
- ▶ Very compact and easy to install
- ▶ Specially treated for rough outdoor conditions. IP65
- ▶ Available in 3 White CCTs



FEATURES & BENEFITS

- ▶ Truly built for outdoors and IP65
- ▶ Intelligent PIR sensor to save more energy. Wide detection angle 120° with 6m detection area
- ▶ Autonomy: up to 5hrs of continuous light
- ▶ Three operating modes
- ▶ Battery can be easily replaced
- ▶ All-in-one-product design allows very easy installation
- ▶ Choose between 3 intensities - each available in WDL, NW and WW
- ▶ Robust and durable: made of ABS and PC. Anti-UV treatments
- ▶ Operating Ambient Temp.: -20 °C to +50 °C

NORMS & CERTIFICATES

- ▶ EN 60598-2-1:1989
- ▶ EN 60598-1:2015
- ▶ EN 62031:2008+A1:2013+A2:2015
- ▶ EN 62493:2015
- ▶ EN 62471:2008
- ▶ EN 55015:2013+A1:2015
- ▶ EN 61547:2009



LIFETIME & WARRANTY

- ▶ Warranty : 2 years
- ▶ Lifetime : 35.000 hrs for Solar wall light
500 cycles for battery

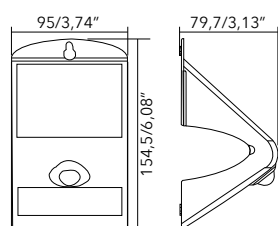
TECHNICAL PERFORMANCE

Code	Designation	Battery voltage (V)	LED power (W)	Panel power (W)	Lumen output (lm)	Efficiency (lm/W)	Beam Angle (°)	Housing	Net Weight (Kg/ lb)
21550016	SENSIK WALL SOLAR 2W 6000K+3000K IP65	3,7	2	1	260	130	120x60	Black and White	0,24/0,53
NC	SENSIK WALL SOLAR 3,2W 6000K+3000K IP65	3,7	3,2	2,3	400	125	120x60	Black and White	0,43/0,95
21550017	SENSIK WALL SOLAR 6,8W 6000K+3000K IP65	3,7	6,8	4,4	800	118	120x60	Black and White	0,79/1,74

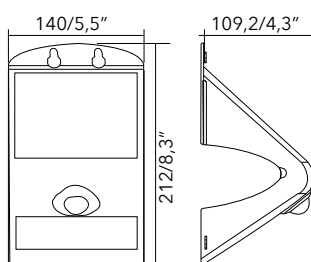
**Tolerance range for optical and electrical data: ±15 %.*

DIMENSIONS

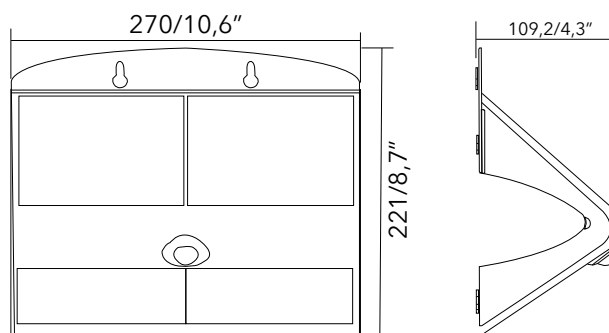
SENSIK WALL SOLAR 2W



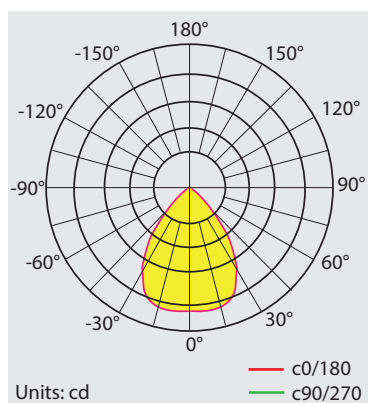
SENSIK WALL SOLAR 3,2W



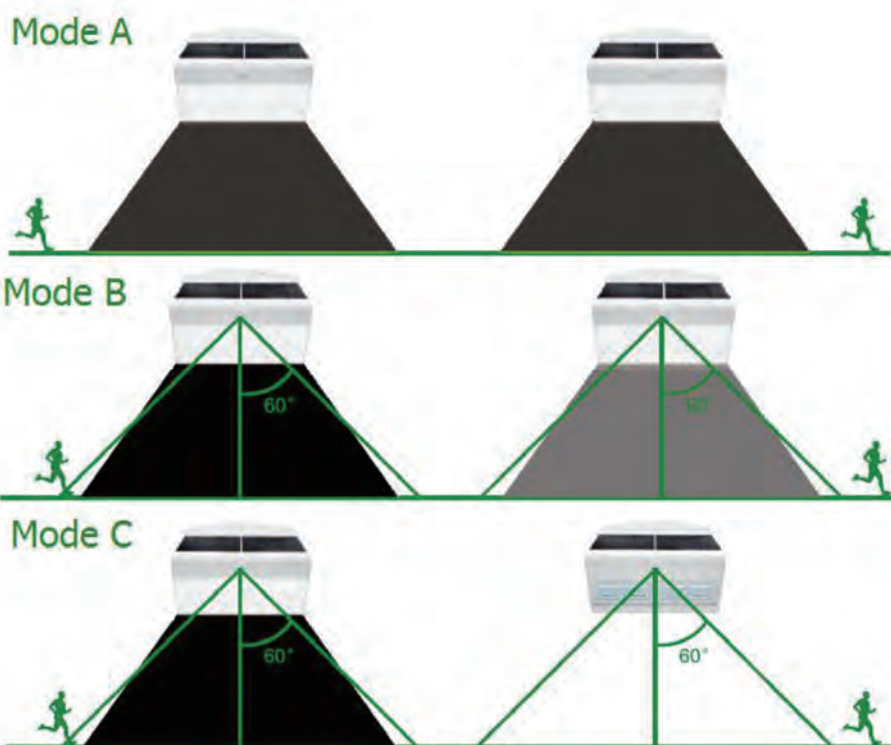
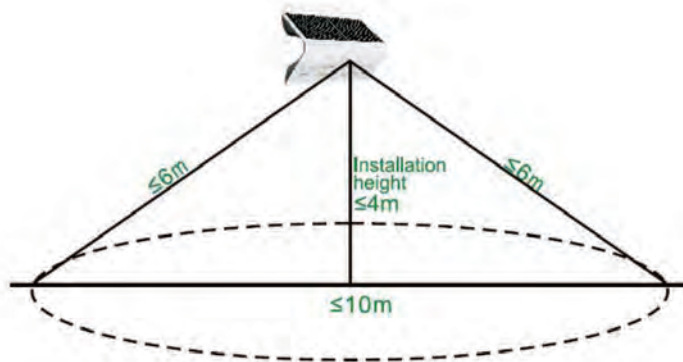
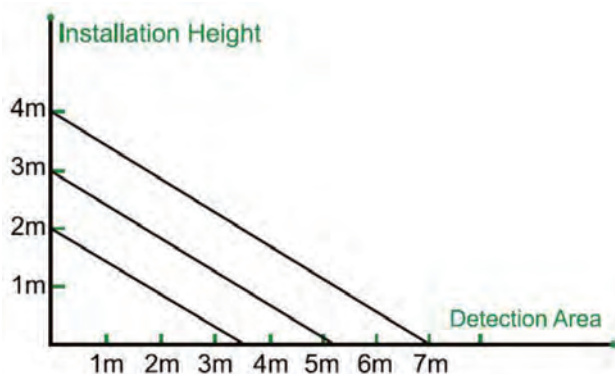
SENSIK WALL SOLAR 6,8W



LIGHT DISTRIBUTION



WORKING MODE



- ▶ **Mode A**
Automatically turns on at dusk (<30 lux) and dims down to 20% brightness, up to 5 hours, after which it turns off.
- ▶ **Mode B**
Automatically turns on to full brightness (260lm) when motion is detected in the range ≤ 6 mtrs, and then dims down to 3% brightness after 20 seconds of no motion.
- ▶ **Mode C**
Automatically turns on to full brightness (260lm) when motion is detected in the range ≤ 6 mtrs, and then turns off after 30 seconds of no motion.

ACCESSORIES

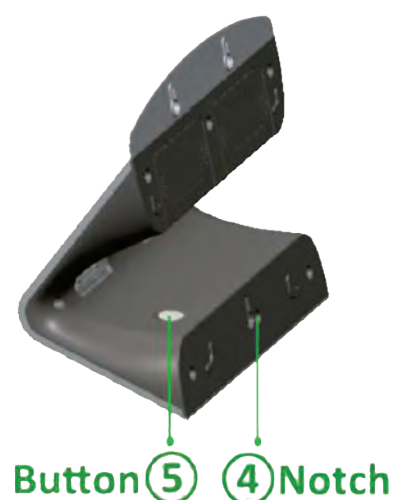
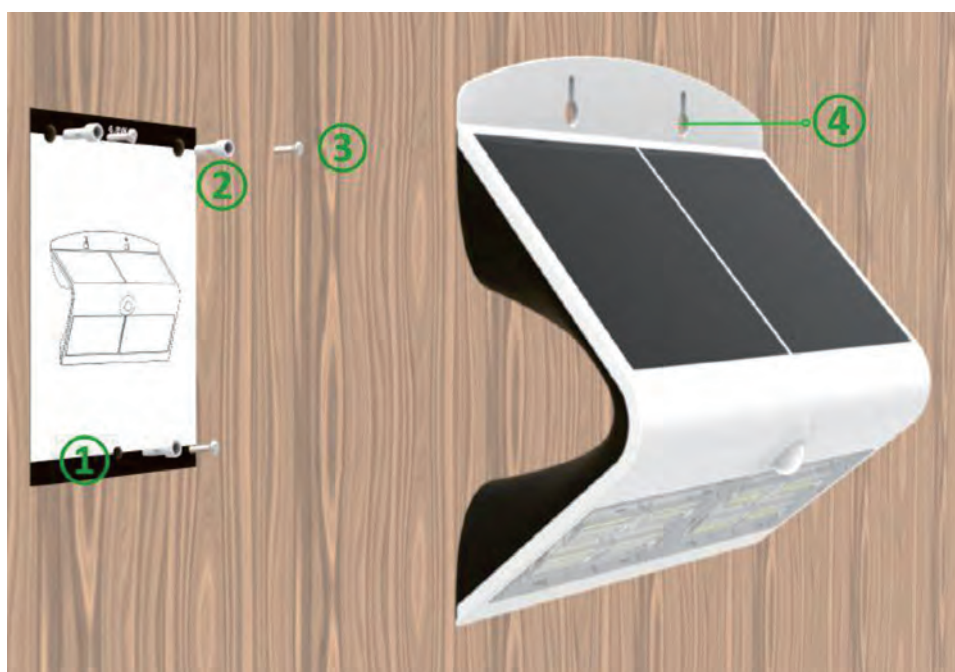
Code	Designation	Quantity
-	Accessories for SENSIK WALL SOLAR 2W	2 Screws +2 White bushing
-	Accessories for SENSIK WALL SOLAR 3,2W	3 Screws +3 White bushing
-	Accessories for SENSIK WALL SOLAR 6,8W	3 Screws +3 White bushing

Screw

White bushing



INSTALLATION



- ▶ Please use the card to measure hole position correctly and drill 2 holes
- ▶ Fix 2 expansion plugs into the holes
- ▶ Fix 2 screws into the expansion plugs with a spare space
- ▶ Insert the notch to the lower screw and fasten the whole lamp well
- ▶ Press the back button to adjust to the demanded working mode

PACKAGING

	Type	SIZE - LxWxH (cm)	SIZE - LxWxH (ft)	Weight (Kg)	Weight (lb)	Nb of Pcs / box
Carton	SENSIK WALL SOLAR 2W	42x34x24	1,4x1,1x0,8	6,2	13,6	20
	SENSIK WALL SOLAR 3,2W	46x38x33	1,5x1,2x1,1	7,5	16,5	12
	SENSIK WALL SOLAR 6,8W	48x47x30	1,6x1,6x1,0	8,3	18,3	8